

April 28, 2023

Dear Mayor Joan Atkinson,

Re: Westcoast Energy Inc. Proposed Project – Sunrise Expansion Program

INTRODUCTION

Westcoast Energy Inc., an Enbridge company, (Enbridge) owns and operates British Columbia's (B.C.) major natural gas transmission infrastructure system, referred to as the Westcoast or BC Pipeline system, which transports processed natural gas to consumers throughout the province and to Alberta and the Pacific Northwest of the United States (U.S.). The Westcoast system is an interprovincial pipeline system with over 2,900 kilometers (km) of pipeline from near Fort Nelson in northeast B.C. and from Gordondale near the Alberta-B.C. border, south to the Canada-U.S. border at Huntingdon/Sumas.

Enbridge plans to apply to the Canada Energy Regulator (CER) in 2024 for approval of the proposed Sunrise Expansion Program (Project). The development of the application will involve a robust environmental assessment process and engagement program to ensure Indigenous, stakeholder and public involvement to identify and mitigate potential effects of the Project. This letter provides information about the Project and a description of upcoming activities related to preparing the regulatory application.

PROJECT OVERVIEW

The Project includes the addition of pipeline looping and additional compression along the southern portion of the Westcoast system, known as T-South. The Project would provide approximately 300 million cubic feet per day (MMcf/d) of additional natural gas transportation capacity. The request for capacity is being driven by the need to meet natural gas demand in B.C. and the U.S. Pacific Northwest.

Project design is under development and configuration of pipeline loops, compressor station modifications and additional compression requirements are subject to change.

Pipeline looping

The preliminary Project design is expected to include a total of approximately 190 km of 42-inch pipeline looping in different segments along the existing T-South system, starting at Compressor Station CS-2 (Willow Flats) near Chetwynd, B.C. The new pipeline looping will be installed next to Enbridge's existing right-of-way to the greatest extent practical to minimize environmental effects. Enbridge's is evaluating the extent of additional permanent and temporary land requirements to accommodate construction and operation of the Project facilities.

Compression facilities

The preliminary Project scope also includes additional compression and associated facilities at CS-2B (Azouzetta Lake), CS-3 (McLeod Lake), CS-6B (93 Mile House) and CS-8A (Kingsvale). Enbridge is also evaluating the option of a new compressor station between CS-8A and CS-9 (Rosedale).

Power transmission

Enbridge is currently evaluating electrification of the new compressor units, which would result in lower emissions. Transmission powerlines and an additional switching station would be required to supply power to the compressor facilities. Powerline routing decisions will require environmental field studies and engagement with local stakeholders and Indigenous groups.

ENVIRONMENTAL AND ENGINEERING FIELD STUDIES

Enbridge is in the early stage of Project development. Early feasibility studies have been conducted and additional environmental, surveying and geotechnical field studies will start this spring. A short description of these activities is provided below.

- Environmental – Enbridge plans to begin environmental studies on select pipeline corridors as seasonal conditions allow, beginning in **May 2023**. These studies will determine the environmental considerations that need to be factored into the design of the Project. Environmental studies will include surveys of fish and fish habitats, vegetation, soils, wetlands and wildlife.
- Geotechnical – Studies are planned to begin in **summer 2023** and will include surface and subsurface exploration to better understand geological conditions for routing design purposes (watercourse crossings, potential geohazards, etc.). The work may include the clearing of small pads to set up drill rigs to collect subsurface samples. The investigative locations will be selected in consultation with Indigenous rightsholders and stakeholders and may be adjusted to mitigate conflicts with respect to safety, environmental, archeological, or cultural considerations.
- Archaeology – Archaeological resources on public and private land are protected under the B.C. Heritage Conservation Act. Field investigations are planned to begin in **June 2023**.

Enbridge will develop comprehensive safety and environmental protection measures to mitigate environmental effects of the Project (e.g., effects on soil and terrain, wildlife and wildlife habitat, aquatic habitat and resources, vegetation, wetlands, air quality and greenhouse gas emissions, and heritage resources) and to ensure public and worker safety.

During construction, there are expected to be temporary effects related to an increase in dust, noise, and traffic within the immediate Project area. These effects would result from passenger vehicles, construction vehicles, and equipment (cranes, picker trucks, semis, and various other construction equipment). Enbridge will work closely with local communities to develop mitigation plans to limit the temporary effects.

OPERATIONAL EFFECTS

Once construction activities are complete, the temporary effects described above are expected to end. Along with the environmental protection measures, restoration activities will be implemented following construction.

The Project will be operated by Enbridge personnel and monitored 24 hours per day by Enbridge's Gas Control operations. The Project will be subject to Enbridge's comprehensive pipeline integrity and maintenance program including regular valve maintenance, cathodic protection, inline inspection, and pigging to detect corrosion and pipeline defects.

TIMELINE OF ACTIVITIES

Investigative and engineering activities commenced in late 2022. Field studies will start in spring 2023 with the CER application submission targeted for mid-2024. Subject to the receipt of regulatory approvals, construction activities would begin in 2026 with planned in-service in 2028. These timelines are subject to change.

MAP AND FACTSHEET

The potential locations for additional pipeline looping and compression are depicted in the attached Project map and factsheet. Following further Project studies, design and engagement with Indigenous groups and stakeholders, the scope will be refined.

RESPONSE AND CONTACT INFORMATION

For more information on the CER's regulatory oversight and review process for the Project, please refer to the enclosed CER brochure, "The CER, Energy Projects and You", which can also be found at: <https://www.cer-rec.gc.ca/en/consultation-engagement/land-matters-guide/brochures/cer-energy-projects-you/index.html>.

We invite you to share interests, comments, questions or concerns regarding the Project so that they may be addressed and considered in the development of this Project. Please advise us if you would like to receive regular updates and information about the Project and, if so, the preferred format (e.g., digital, hard copy, mail, e-mail).

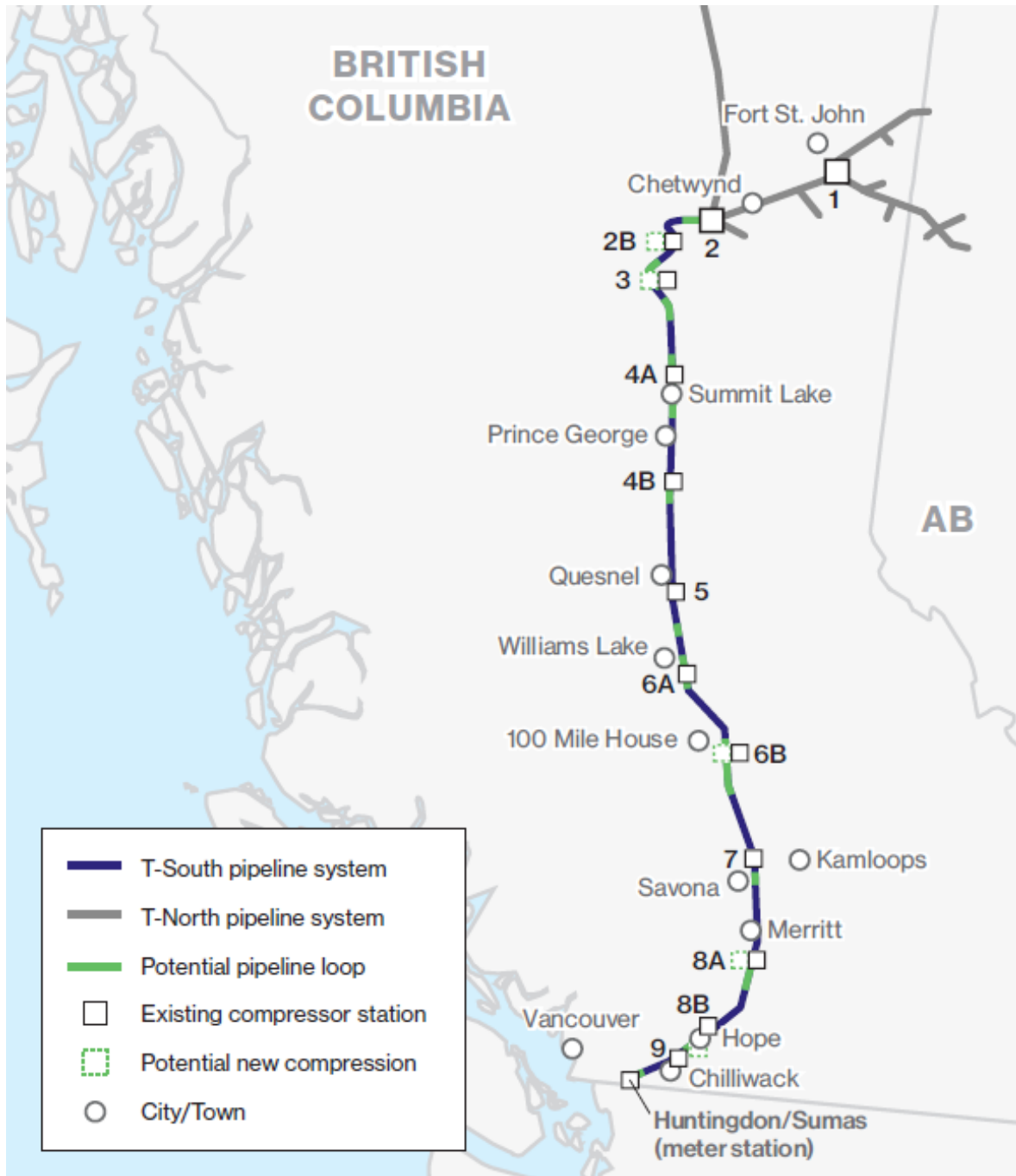
For more information on the Project please visit our website at <https://www.enbridge.com/projects-and-infrastructure/projects/sunrise-expansion-program> or visit our virtual open house at www.sunrise-program.com.

For more information, questions or concerns please contact us directly:

Rikki Beaudet Community and Indigenous Engagement Phone: 250-960-2087 Email: Rikki.Beaudet1@enbridge.com	General Inquiries Phone: 1-833-267-2220 (toll-free) Email: BCprojects@enbridge.com
---	--

*Enclosures: Factsheet: Sunrise Expansion Program
Pamphlet: The CER, Energy Projects and You*

PROJECT MAP



Map is for illustrative purposes only and not to scale. Project design is under development and configuration of pipeline loops, compressor units and additional compressor station modifications are subject to change.

In case of an emergency, please contact Enbridge's 24-hour emergency number: 1-800-663-9931



Canada Energy
Regulator

Régie de l'énergie
du Canada



Canada Energy
Regulator

Régie de l'énergie
du Canada



Safety is everyone's
responsibility



Safety is everyone's responsibility. For us, it is our job. Protecting you and the environment is the CER's priority. Here are a few things you should know.

Damage prevention: If you live or work near a pipeline, find out how to safely do your activities. Before you dig near a pipeline, get the company's consent. Visit clickbeforeyoudig.com to locate buried pipelines or utility lines.

Compliance and enforcement: CER inspection officers regularly go out into the field to verify and enforce requirements and standards in place to keep people and the environment protected.

Emergency management: In an emergency, we make sure companies respond in a way that protects people, property, and the environment. We expect them to take the action needed to stop spills, manage the incident, and clean up and pay for any damage done.

Find out more

Find out more about the Canada Energy Regulator by visiting us online at www.cer-rec.gc.ca.

Be sure to follow us on social media for the latest updates.



For copies of any CER publication or for more information, contact us:

ONLINE: www.cer-rec.gc.ca
EMAIL: info@cer-rec.gc.ca
TOLL FREE: 1-800-899-1265

Write us or visit our library at:

Canada Energy Regulator
Suite 210, 517 Tenth Avenue SW
Calgary, Alberta T2R 0A8

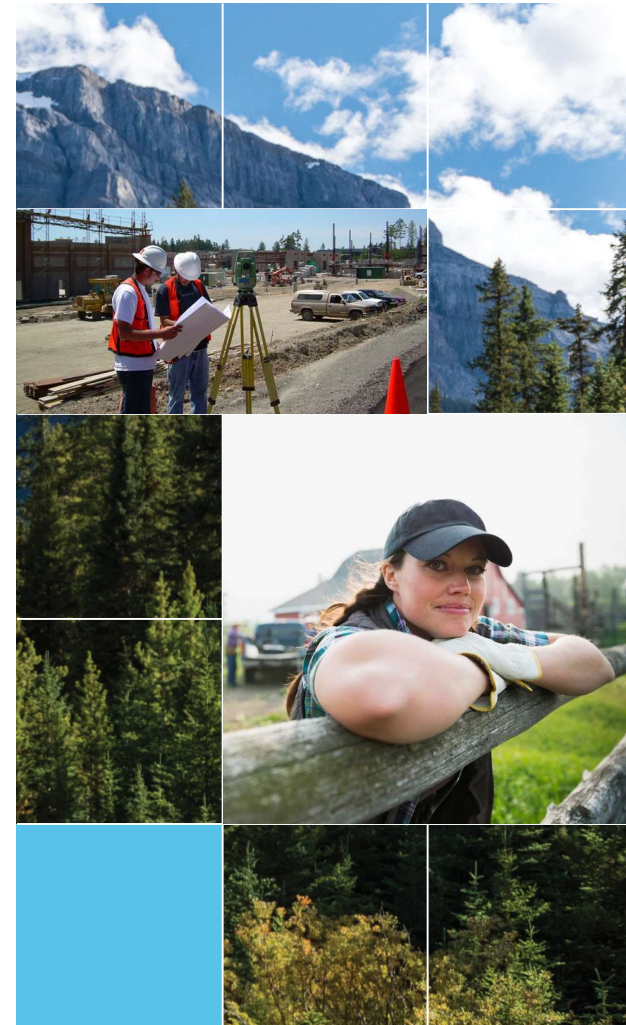
© His Majesty the King in the Right of Canada 2023
as represented by the Canada Energy Regulator

The CER, Energy Projects and You

Cat. No. NE23-210/2023E (PDF)
ISBN 978-0-660-46997-3

Cat. No. NE23-210/2023E (Paper)
ISBN 978-0-660-46998-0

The CER, Energy Projects, and You



The Canada Energy Regulator (CER) oversees federally regulated pipelines, power lines, and offshore renewable energy projects.



When you hear from a company about a project being proposed on your land, you may have questions and concerns. We understand.

Explore the topics from this brochure on our website, www.cer-rec.gc.ca.

Simply search for the **bolded** words for more information and *italicized* words for forms and templates.



Be part of the project – work with the company



Contact the company first. Your questions and concerns help shape the company's project. Companies are required to listen and respond to your comments and concerns. They must also identify the possible effects on nearby people, property, and the environment when it applies to the CER. Here are some opportunities to work with the company.

- **Early engagement:** We expect companies to engage early about a project and demonstrate to us how it considered the information it gathered. Let the company know whether the project may affect you. The company will let potentially affected people and communities know when it files an application with the CER.
- **Land agreements:** The company must tell you what land it is planning to use to construct, operate, and maintain its proposed project. It may propose a land agreement with you to confirm the lands the company can work on.
- **Land use compensation:** The company must compensate you for land acquisition, restricted use of lands, or damages caused by its activities.



CER project review – be heard

Before the company can build or abandon a federally regulated pipeline, power line, or offshore renewable energy project, it must apply to the CER. We will review and assess the proposed project, including the company's engagement activities and potential effects on people, property, and the environment.

- **Statement of concern:** We rely on you to bring forward your concerns and views. If you have concerns about a project, you can send us a *Statement of Concern* within 21 days of being notified that the company has filed an application. Your concerns will guide the CER in planning its review.
- **Projects and hearings:** The CER may hold a public hearing for facilities applications. If you have questions about the **hearing process**, contact a **process advisor**.



CER processes in place to help you

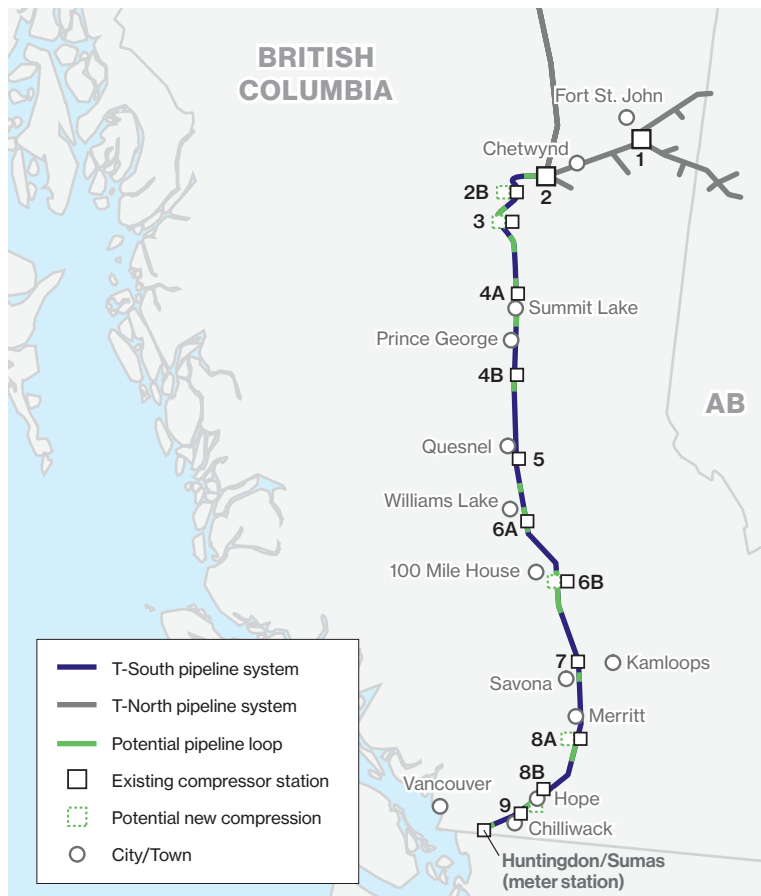
- **Land Matters Advisory Service:** If you have questions about land matters with respect to CER-regulated energy projects and processes, email LMAS@cer-rec.gc.ca.
- **Alternative dispute resolution:** Any time during the life of a project, if you are unable to resolve concerns directly with the company, you can email ADR-RED@cer-rec.gc.ca to ask a specialist to work with you and the company to find solutions.
- **Complaint resolution:** If you are unable to resolve an issue with a CER-regulated company, facility, or activity on lands you use or own, you can send us a completed *Complaint Form*.



Sunrise Expansion Program

> Image above: existing compressor station 5 – “Australian” – near Quesnel, BC

Westcoast Energy Inc., an Enbridge company, (Enbridge) owns and operates British Columbia's (BC) major natural gas transmission infrastructure system, referred to as the Westcoast or BC Pipeline system, which transports processed natural gas to consumers throughout the province and to Alberta and the Pacific Northwest of the United States. This gas is used to heat homes, businesses, hospitals and schools. It is also used as a fuel for electric power generation and is a staple in many industrial and manufacturing processes.



Map is for illustrative purposes only and not to scale. Project design is under development and configuration of pipeline loops, compressor units and additional compressor station modifications are subject to change.

Project scope

Following a successful open season in 2022 that resulted in requests for additional transportation capacity, Enbridge is proposing an expansion of the southern portion of the Westcoast system known as T-South. The proposed expansion, named the Sunrise Expansion Program (Project), currently includes the addition of pipeline looping and additional compression along T-South to provide approximately 300 million cubic feet per day (MMcf/d) of additional natural gas transportation service. The targeted in-service date is late 2028.

Enbridge is in the early project development stage and studies will be required to support a regulatory application to the Canada Energy Regulator in mid-2024. The upcoming studies will help determine the specific configuration, location and timing of any new facilities, including compressor stations and pipeline loops. Project planning, feasibility studies and consultation with Indigenous groups, landowners and local communities will be undertaken to determine the detailed design of the Project.

Investigative field work studies

Enbridge plans to begin investigative environmental and geotechnical studies on select pipeline corridors as seasonal conditions allow, beginning in spring 2023. This work will determine any environmental or geotechnical considerations that may need to be factored into the scoping of the Project.

Field studies will include surveys of fish and fish habitats, vegetation, soil, watercourses, wetlands, wildlife and archaeology.

The proposed locations of field studies does not necessarily mean that an expansion will occur in that specific area. Rather, the information that is collected in the studies – along with other information such as Indigenous rightsholder interests and knowledge, and input from landowners and other local stakeholders – will inform the Project scope. Enbridge is committed to working with Indigenous groups, landowners and other interested parties. By understanding these interests, Enbridge will be in a better position to incorporate them into any upcoming field studies or Project-related activities.



Indigenous engagement

Enbridge is committed to developing economic opportunities for Indigenous groups and local communities ranging from training and employment opportunities to the procurement of goods and services from Indigenous businesses through a proactive supply chain process. Enbridge will seek to provide opportunities on the Project initially through employment and contracting in the early investigative studies, and during construction.

Enbridge is continuing its efforts to contribute to Indigenous reconciliation through enhanced hiring efforts, cultural awareness training and long-term economic benefits for Indigenous communities.

Stakeholder engagement

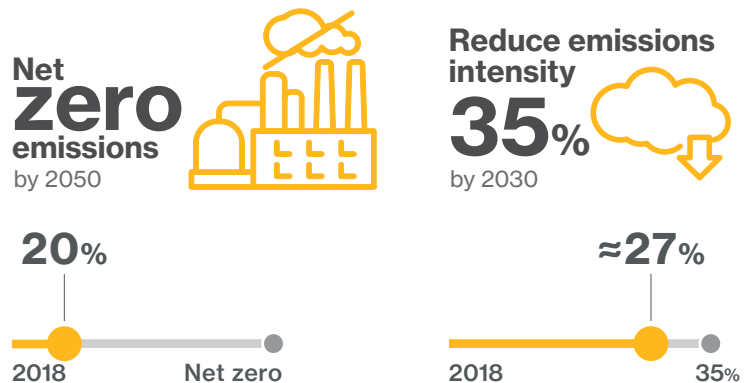
Consistent and transparent engagement with potentially affected stakeholders, including landowners, is a critical part of developing and operating safe projects.

We seek to create and sustain long-term value for landowners and communities near our projects and operations.

The Project is proposed to occur primarily along Enbridge's existing right-of-way. Enbridge is evaluating the extent of additional permanent and temporary land requirements to accommodate construction and operation of the Project facilities, as the project design is refined. Enbridge will work closely with landowners during the Project development and design phase to gather feedback and respond to any questions or concerns.

Environmental performance commitment

Enbridge's environmental, social and governance (ESG) goals represent the next stage of our evolution as an ESG leader to ensure we're positioned to grow sustainably for decades to come. We believe climate change requires serious solutions and we're committed to delivering the energy mix of today and tomorrow – and helping to meet those needs in ways that are ethical, sustainable and socially responsible. Through these efforts, we will be en route to achieving company-wide net-zero emissions by 2050. To find out more about how we plan to meet these goals, please visit enbridge.com/esggoals.



Investing in Canada Infrastructure Program

The Investing in Canada Infrastructure Program allows BC to cost-share infrastructure investments between the governments of Canada and BC, local governments and other partners. As part of our commitment to environmental performance, Enbridge is currently evaluating the development of electric drive compression stations for this Project and applied to the Infrastructure Grant Planning Program in early 2023.

Contact us

Email

BCprojects@enbridge.com

Phone

1-833-267-2220 (toll-free)

Mail

Enbridge Inc.
3985 22 Ave
Prince George, BC V2N 1B7

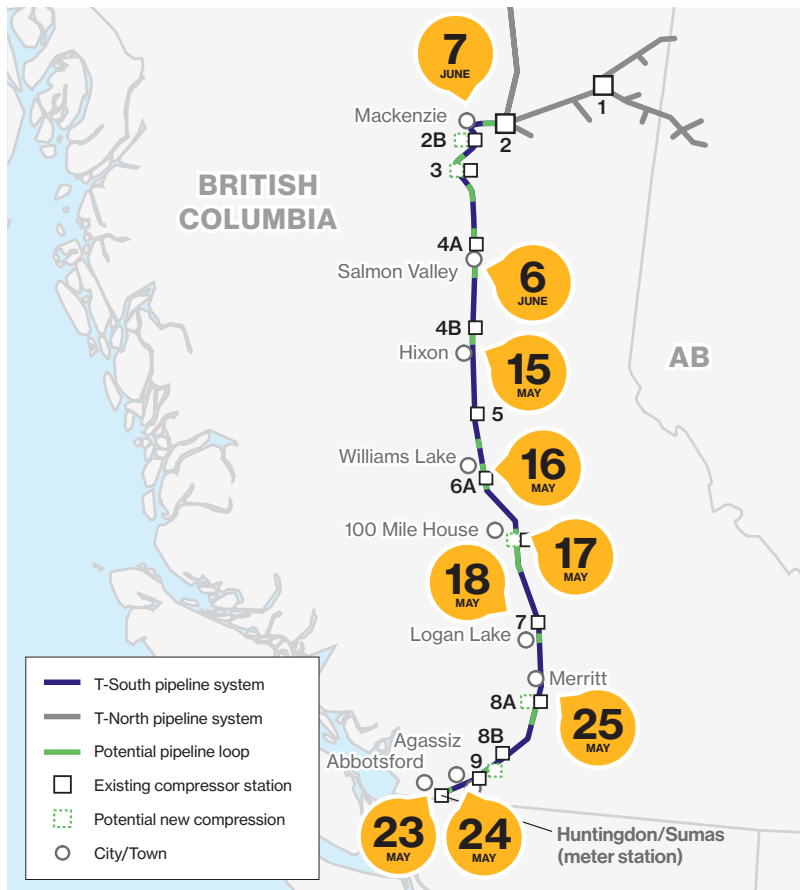
Open house. Open conversation.

Enbridge is proposing an expansion of the southern portion of its natural gas transmission system to meet additional natural gas demand in the province and Pacific Northwest of the United States.

Please join us at an open house near you to learn about the Sunrise Expansion Program and meet members of the team who will be in attendance to gather your input and share information about the proposed Project.

Snacks and refreshments will be served.





2023 open houses will take place from 3 - 7 p.m. on the following days:

Monday, May 15

Hixon Community Hall

Tuesday, May 16

Williams Lake Tourism
Discovery Centre

Wednesday, May 17

100 Mile House Community Hall

Thursday, May 18

Logan Lake District Fire Hall

Tuesday, May 23

Abbotsford Clarion Hotel
and Conference Center

Wednesday, May 24

Agassiz Agricultural Hall

Thursday, May 25

Merritt Civic Center

Tuesday, June 6

Salmon Valley Hart Pioneer Centre

Wednesday, June 7

Mackenzie Recreation Centre

Call us toll-free at **1-833-267-2220**,
email us at bcprojects@enbridge.com
or visit sunrise-program.com
for more information.